

Overview

PRIME RGB 5300 is a full-color laser projector designed for large-scale indoor shows and also for small-scale outdoor events.

Its compact size and extremely powerful output have made it a perfect choice for mobile show applications as well as fix installation projects!



Front Panel



Rear Panel



Front 45°



Rear 45°

Reinforced Yoke handle with light Weight for comfortable handling



Specifications

Light Source

Red :	1360 mW @ 637nm	Single Mode Direct-Inject diodes
Green :	2000 mW @ 520nm	Multi-Mode Direct-Inject diodes
Blue :	2000 mW @ 445nm	Multi-Mode Direct-Inject diodes
		462nm on-request

Total Output @ Projector window: 4500mW ~ 4900mW

Beam Diameter (Projector Window): < 4 mm

Divergence (Full angle): < 1 mrad (Full angle)

Modulation : Analog 50KHZ

Laser Class : Class IV

Scanner

Galvo : 40K (EMS 8000 60K upon request)

Scan Angle : 60° Max

Interfaces & Controls

- Control : ILDA in (Differential) , ILDA out
- Safety : Key Switch , FDA Scan-safe Switch
- Remote Interlock : 3 pins XLR
- Scan Image Invert : Invert – X , Invert – Y
- Color adjustment : Intensity R, G, B (0-100%)
- Mains : Neutrik PowerCon®

Optional Components

- Controller: Moncha.net (upon request)
- Pangolin FB4 (upon request)



moncha.lite Version



Pangolin FB4 Version

- Window Protection : Slide-type window Cover / Hardware mask (upon request)
- Light Source: 462nm instead of 445nm

Thermal Control

- Cooling : TEC Peltier Elements
- Ventilation : 40mm Low noise fan * 4

Electric

- Operating Voltage : AC 110V-240V

Power Consumption: 280W Max

Physical

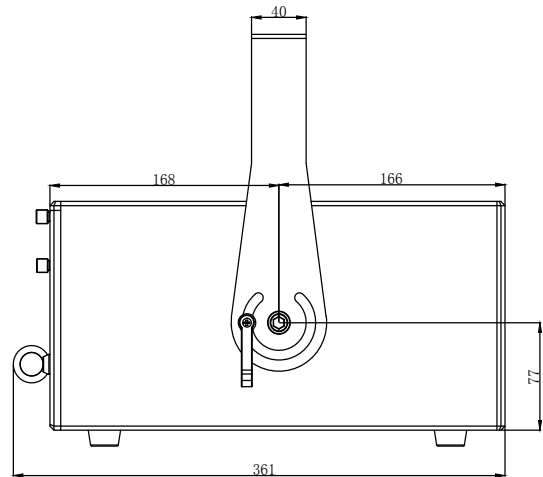
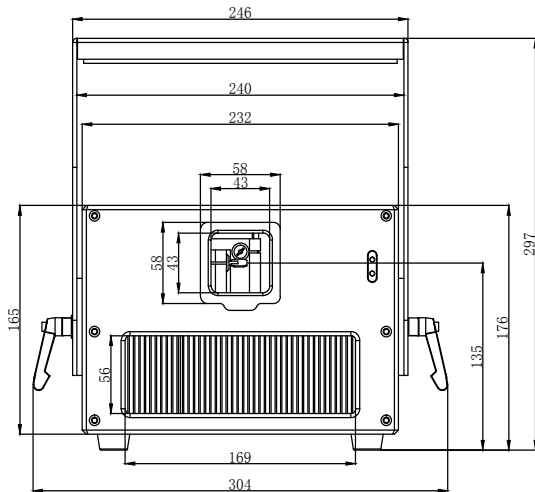
L * W * H : 334mm * 232mm * 165mm (Without Yoke, Without feet)

Weight : 12.5 kg (Without Yoke)

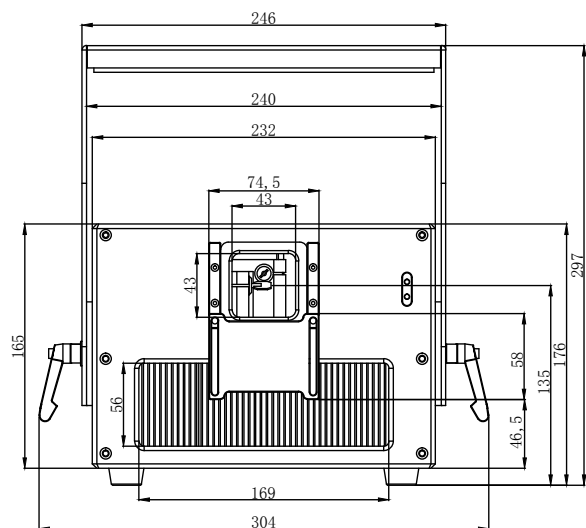
Housing Materials : Black Anodized Aluminum

IP grade : IP54

Packaging : Flight case



Slide Window Cover Version



Compliance

Compliance FDA/CDRH, CE, RoHS

Warranty

Warranty 24 months parts and labor

* The above specifications subject to change without prior notice