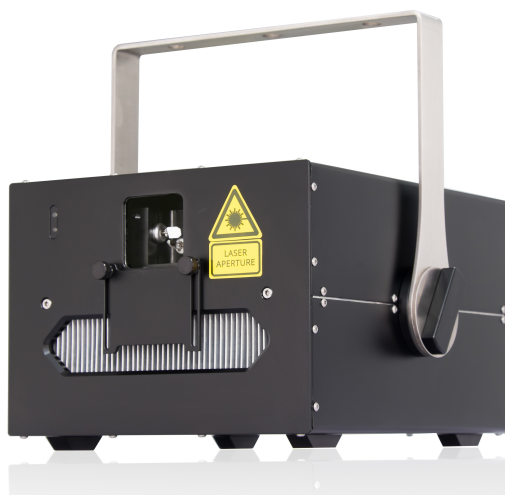


Overview

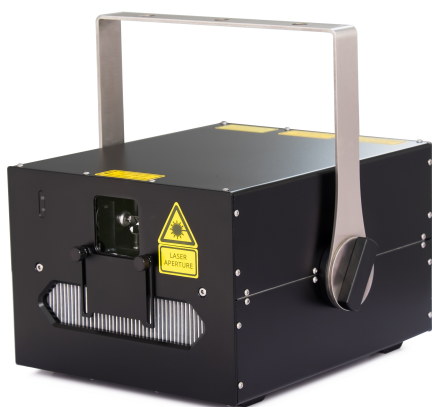
PRIME RGB 7500 / PRIME RGB 5300 is a full-color laser projector designed for large-scale indoor shows and also for small-scale outdoor events. Its compact size and powerful output have made it a perfect choice for mobile show applications as well as fix installation projects!



Front Panel



Rear Panel



Front 45°



Rear 45°

Specifications

Light Source			
Model	PRIME RGB 7500	PRIME RGB 5300	
Red :	2220 mW @ 637nm	1480 mW @ 637nm	Single Mode Laser diodes
Green :	2000 mW @ 520nm	2000 mW @ 520nm	Multi-Mode Laser diodes
Blue :	4000 mW @ 445nm	2000 mW @ 445nm	Multi-Mode Laser diodes
Total Output @ Projector Window	6200 ~ 6600mW	4500 ~ 4900 mW	

Beam Diameter (Projector Window): < 4 mm

Divergence (Full angle): < 0.9 mrad (Full angle)

Modulation : Analog 50KHZ

Laser Class : Class IV

Scanner

Galvo : 40K (EMS 8000 60K upon request)

Scan Angle : 60° Max

Interfaces & Controls

Control : ILDA in (Differential) , ILDA out

In – Built Controller Pangolin FB4 (upon request)

DMX / Ethernet (Optional) DMX in / Out (When FB4 & DMX daughter board is embedded)
 Ethernet RJ45 in/Out (When FB4 is embedded)

Safety : Key Switch , Scan-Fail-Safe Switch

Remote Interlock : 3 pins XLR

Scan Image Invert : Invert – X , Invert – Y

Color adjustment : Intensity R, G, B (0-100%)

Mains : Neutrik PowerCon®

Thermal Control

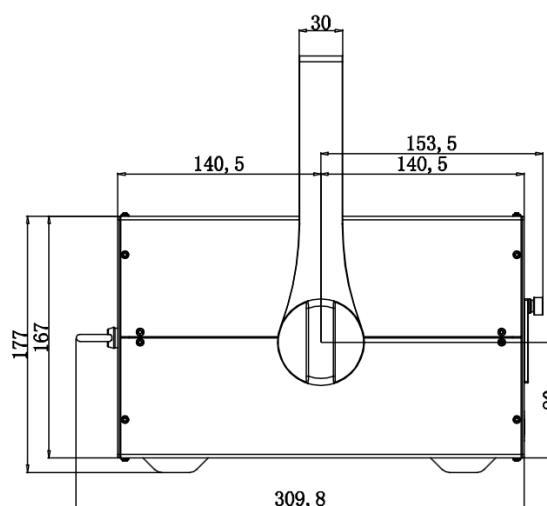
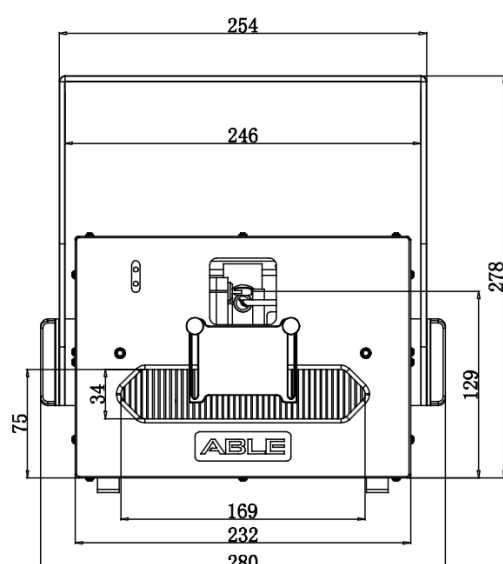
Cooling : TEC Peltier Elements
Ventilation : 40mm Low noise fan * 4

Electric

Operating Voltage : AC 110V-240V
Power Consumption: 280W Max

Physical

L * W * H : 281mm * 232mm * 167mm (Without Yoke, Without feet)
Weight : 11 kg
Housing Materials : Black Anodized Aluminum
IP grade : IP54
Packaging : Flight case



Compliance

PRODUCT INFORMATION

PRIME **R****G****B** 7500



Compliance

FDA/CDRH, CE, RoHS

Warranty

Warranty

24 months parts and labor

* The above specifications subject to change without prior notice