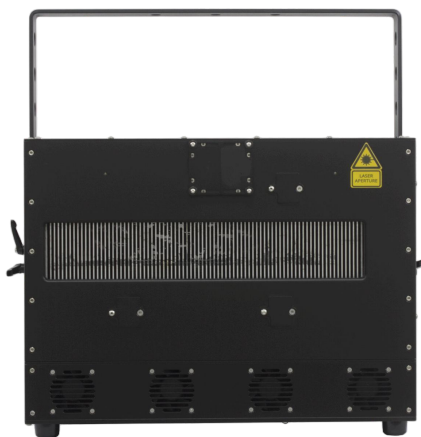


Overview

TRIUMPH RGB 120000 is a full-color laser projector for customers who seek for Immense power output.

The EMS9000 scanner provides with high-speed performance.

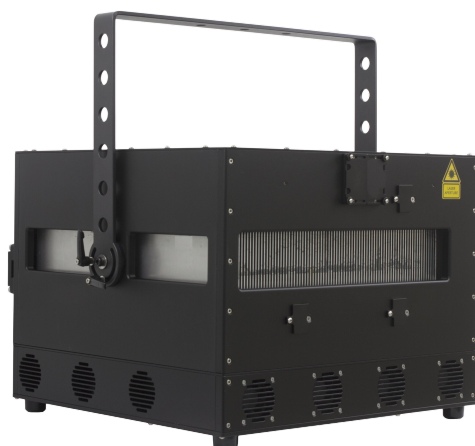
IP65 rated housing design enables the unit to withstand harsh weather conditions.



FRONT



REAR



FRONT 45°



REAR 45°

Specifications

Spec Power @ Light source

	<u>TRIUMPH RGB 120000</u>
R	30000 mw@638nm
G	40000 mW@525nm
B	50000 mW@450nm

Beam Profile

	<u>TRIUMPH RGB 120000</u>
Beam Diameter (Projector Window) :	10mm * 10mm
Divergence (Full angle) :	< 1.6mrad
Modulation :	Analog 50KHZ
Laser Class :	Class IV

Note: The beam divergence is calculated as the arithmetic mean of all individual colors.

The divergence of each color is calculated as the arithmetic mean of the beam's horizontal and vertical divergence.

Scanner

Galvo :	EMS9000 30kpps @ 8° ILDA
Scan Angle :	test pattern 48° Max

Interfaces & Controls

Control :	ILDA in (Differential)
Safety :	Key Switch,
Remote Interlock :	5/8 pins out from Ethercon RJ45
Mains :	Neutrik PowerCon® TRUE1 TOP

Optional Components

Embedded Controller :	Pangolin FB4 (upon request)
Motorized Beam Alignment :	Electronic dichroic filter adjuster

Thermal Control

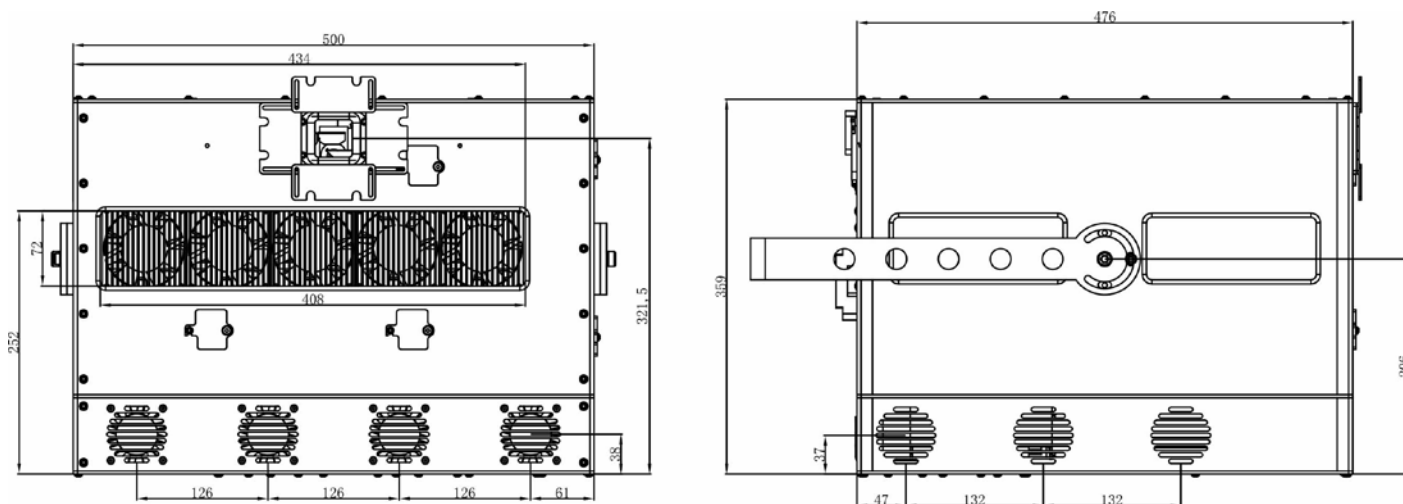
Cooling :	Active Cooling/heating by TEC Peltier Elements
Heating :	Heating rod
Ventilation :	60mm*4 & 80mm*5 IP69K thermal-controlled fan

Electric

Operating Voltage :	AC 110V-240V
Power Consumption :	2700W Max

Physical

L* W * H :	510mm* 500mm* 359mm (Without Yoke & feet)
Weight :	77kg (With Yoke)
Housing Materials :	Black Anodized Aluminum
IP grade :	IP65
Packaging :	Flight case



Compliance

Compliance	FDA/CDRH, CE
------------	--------------

Warranty

Warranty	24 months parts and labor
----------	---------------------------

* The above specifications subject to change without prior notice